

## MiniTech

### Default codes

<b>Master</b>	1 2 3 4 5 6 7 8	
<b>Manager</b>	0 1 - 1 2 3 4 5 6 +	Optional Dallas key/Finger print
<b>User 2</b>	0 2 - 0 2 0 2 0 2 +	Optional Dallas key/Finger print
<b>User 3</b>	0 3 - 0 3 0 3 0 3 +	Optional Dallas key/Finger print
<b>User x</b>	x x - x x x x x x +	Optional Dallas key/Finger print

#### Dallas key/ Finger print Override user

In the event that the user is composed of "code + Dallas key/Finger print", before or after entering the code, the Dallas key/Finger print must be placed on the appropriate Dallas key/Finger print reader.

Override users open without waiting the time delay. In the default programming they are set in dual code opening but, upon request, the single mode opening can also be set.

#### Silent alarm

It is activated by increasing or decreasing the last digit by one number when entering the opening code.




#### Penalty

After four attempts to enter an incorrect code, the lock starts a 4-minute delay period. Each attempt to enter the code within the 4 minutes delay period restarts the count.

#### Low battery warning

A series of beeps while opening indicates a low battery level. Replace immediately the low battery with a new Alkaline one.

#### Sound signals

A double beep  normally indicates a correct operation. A long beep  indicates an incorrect operation and the end of the operation itself. A bad sound  indicates an incorrect finger print entering.

#### Recomm.

Do not use easily identifiable codes such as 123456, dates of birth or other personal information. Recommended to record thumb and index finger prints for a better use.

### Opening *(It is recommended to change the factory code before use and to safely store the new code)*

Press any key to turn on the device. The display shows the message:

Enter the opening code. The display shows the time delay counting if programmed.

At the end of the time delay, the display shows the counting of the open window.

Enter the opening code. The display shows the message:

Open the safe door within 4 seconds.

### Dual code opening *(It is recommended to change the factory code before use and to safely store the new code)*

Press any key to turn on the device. The display shows the message:

Enter the opening code. The display shows the time delay counting if programmed.

At the end of the time delay, the display shows the counting of the open window.


Enter the 1° opening code. The display shows the message:

Enter the 2° opening code. The display shows the message:

Open the safe door within 4 seconds.

### Change code *( Safely store the new code and perform various opening / closing tests before closing the safe door )*

To be performed with the door open!

Press and hold . The display shows the message:


Enter the **old code**. The display shows the message:

Enter the **new code**. The display shows the message:


Confirm the **new code**.

Perform various opening / closing tests before closing the safe door.

### Users management

Press and hold . The display shows the message:

Enter the Manager code.

Press  to scroll the list or enter the user ID.

USER CODE  
X X - X X X X X X

TIME DELAY  
00:59

OPEN WINDOW  
00:01

OPEN

USER CODE  
X X - X X X X X X

TIME DELAY  
00:59

OPEN WINDOW  
00:01

2° USER CODE  
X X - X X X X X X

OPEN WINDOW

OLD CODE  
X X - X X X X X X

NEW CODE  
X X X X X X

CONFIRM CODE  
X X X X X X

OPERATION  
DONE

USERS MANAGEMENT  
0 1 - X X X X X X

02 03 04 05 06  
✓ x - - ✓

## User instructions

## MiniTech

"✓" installed user, "X" deleted user, "-" disabled user.

The override users (50 – 59) can be installed only when the lock is open.

Press ☒. If the user is not installed, the display shows the message:

Press ☒ to confirm, or ☐ to disable/enable/delete and ☒ to confirm.

### Membrane test

Press any key to turn on the device.

Press and hold the button ☐ 5. The display shows the message:

Press in sequence the buttons shown in the display.

A confirmation beep is given for each pushed key working properly.

A damaged key is indicated with a long beep. The display shows the message:

### Change date and time

Press (or press and hold) ☒. The display shows the message:

Enter the Master code. The display shows the message:

Press ☒. The display shows the date and time currently set:

To modify, press ☒. The display shows the message:

Enter time and date and press ☒ to confirm.

### Block system

Press and hold ☐ 4. The display shows the message:

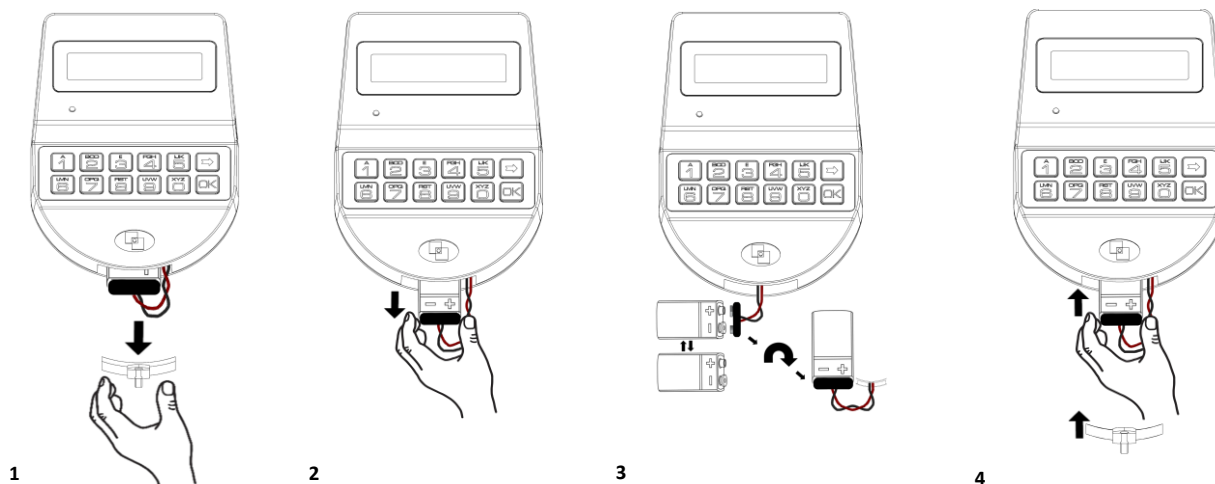
Enter the code authorized for the block operations. The display shows the message:

Enter reopening date and time (max. 31 days).

Press ☒ to confirm. The display shows the message:

Press ☒ to confirm. The display shows the message:

### Battery replacement procedure *(To be performed with door open)*



02  
INSTALL?

MEMBRANE TEST  
1234567890 ☒

MEMBRANE TEST  
1234567890 ☒

WRONG/FAULTY  
KEY

MENU MASTER  
X X X X X X X X

TIME AND DATE  
SETTINGS

12:00 WED  
13 /02/2019

hh:mm \_ \_ \_ \_  
DD/MM/YYYY

BLOCK SYSTEM  
X X - X X X X X X

BLOCK UNTIL  
DD/MM hh:mm

BLOCK UNTIL  
13/02 12:00

BLOCK THE LOCK?

LOCK  
BLOCKED

### Further information

For the complete manual and further information on the product's features, please visit [www.tecnosicurezza.it](http://www.tecnosicurezza.it)

