



Pulse 10 users

User instructions

In the pre-setup mode, press 1 to open the lock and to activate the silent alarm. In pre-setup, programming can be performed through a Dallas key or by selecting one of the following 4 preloaded configurations:

No. configuration	Maximum number of users	Dual mode
0	2	No
1	9	No
2	2	Yes
3	9	Yes

Silent alarm option can be activated in pre-setup mode thanks to a setup Dallas key, or in any moment by simply connecting an alarm interface with the lock and entering an opening code.

Select a keypad configuration (only in pre-setup status)

- Press the key 2 for few seconds, enter the code 55555 and select the desired configuration number.
- At the end of the configuration only the Manager is installed, with code 123456.
- If all users are blocked and only the Manager code is enabled, the time delay function is not available.

Manager	123456 +	Optional Dallas key	Opens, program and change its own code
Users	xxxxxx +	Optional Dallas key	Open and change their own code

Dallas key

In the event that the user is composed of "code + Dallas key", after entering the code, the Dallas key must be placed on the appropriate Dallas key reader.

Override user

The override user 9 opens without waiting the time delay. By default it's set in dual mode opening but, upon request, the single mode opening can also be set.

Silent alarm

It is activated by increasing or decreasing the last digit by one number when entering the opening code.



Penalty

After four attempts to enter an incorrect code, the lock starts a 4-minute delay period. Each attempt to enter the code within the 4 minutes delay period restarts the count.

Low battery warning

A series of beeps while opening indicates a low battery level. Replace immediately the low battery with a new Alkaline one.

Sound signals

A double beep  normally indicates a correct operation. A long beep  indicates an incorrect operation and the end of the operation itself.

Recommendations

Do not use easily identifiable codes such as 123456, dates of birth or other personal information.

Opening (It is recommended to change the factory code before use and to safely store the new code)

Enter the opening code (default Manager code 123456).

If the code is correct, the keypad will beep twice.

If programmed, the time delay count starts. The LED flashes every 2 seconds.

A beep every 2 seconds indicates the end of the time delay count.

Enter the opening code. The keypad beeps twice.

Open the safe door within 4 seconds (with MotorLock T4710/M, 2 beeps and 2 LED flashes are produced when the lock re-closes).

Dual mode opening (It is recommended to change the factory code before use and to safely store the new code)

Enter the first opening code.

If programmed, the time delay count starts. The LED flashes every 2 seconds.

A beep every 2 seconds indicates the end of the time delay count.

Enter both opening codes. The keypad beeps twice.

Open the safe door within 4 seconds.



Change code *(Safely store the new code and perform various opening / closing tests before closing the safe door)*

To be performed with the door open!

Press and hold **0** until the double beep. The LED remains on.

Enter the **old code**.

Enter the **new code**.

Confirm the **new code**.

Perform various opening / closing tests before closing the safe door.



Activate a new user *(Function not available if an user is already activated or disabled)*

Press and hold **1** until the double beep. The LED remains on.

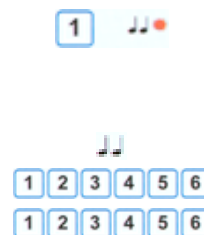
Enter the Manager code.

Enter the number of the user to be installed (from 1 to 9).

If the user is available, the keypad beeps twice.

Enter the code to be associated with the user (and the Dallas key if necessary).

Enter again the code to confirm it (and the Dallas key if necessary).

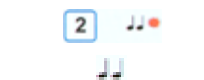


Disable/Enable users *(Function not available with dual mode opening active or if an user is already disabled)*

Press and hold **2** until the double beep. The LED remains on.

Enter the Manager code. The keypad beeps twice.

All users are disabled/enabled.



Delete an user *(Function not available if an user is disabled or not activated)*

Press and hold **3** until the double beep. The LED remains on.

Enter the Manager code.

Press the key corresponding to the user to be deleted (from 1 to 9).

The keypad beeps twice. The user is deleted.



Manager code check

Press and hold **4** until the double beep. The LED remains on.

A double beep means the factory Manager code (123456) has been changed.

A long beep means the factory Manager code (123456) has NOT been changed.

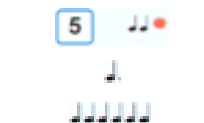


Membrane test

Press and hold **5** until the double beep. The LED remains on.

Enter the sequence of numbers from 1 to 0. A confirmation beep is given for each key.

A damaged key is indicated with a long beep.



Time delay *(Time Delay programmable from 0 to 99 minutes; Open Window from 1 to 19 minutes)*

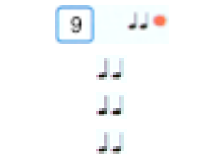
Press and hold **9** until the double beep. The LED remains on.

Enter the Manager code. The keypad beeps twice.

Enter the values for the time delay and the open window in two digits (i.e. 10 and 05).

Confirm the values for time delay and open window in two digits (i.e. 10 and 05).

Attention, the time delay can only be lowered in the open window.



Further information

For the complete manual and further information on the product's features, please visit www.tecnosicurezza.it



GLOBAL HEADQUARTERS
Tecnosicurezza SpA
Via Cesare Battisti, 276
37057 San Giovanni Lupatoto
Verona
Tel.+39 045 826 64 70
Fax. +39 045 826 64 69
info@tecnosicurezza.it

USA HEADQUARTERS
Tecnosicurezza Inc.
50, Thomas Lane
Versailles, KY 40383
Tel.+1 859 490 89 30
info@usatecno.com

SPAIN HEADQUARTERS
Tecnosicurezza Sa
C/Menor, 4 - Nave 10
Pol. Ind La Mina 28770
Colmenar Viejo
Tel.+34 91 804 33 91
Fax.+34 91 804 32 63
info@tecnosicurezza.es