

## Pulse 10 users

In pre-setup mode, press 1 to open the lock and activate the silent alarm. When in this mode, the programming can be performed by a Dallas key (contact Tecnosicurezza for more information) or directly from the keypad, by hold-pressing 2, entering the code "55555" and entering one of the following 4 preloaded configurations number:

No. configuration	Maximum number of users	Dual mode
0	2	No
1	9	No
2	2	Yes
3	9	Yes



At the end of the configuration only the Manager is installed, with code 123456.

If all users are blocked and only the Manager code is enabled, the time delay function is not available.

**Manager** 123456 + Optional Dallas key Opens, program and change its own code

**Users** xxxxxx + Optional Dallas key Open and change their own code

Change the factory codes before use and safely store the new codes.

<b>Dallas key</b>	If the user is composed by "code + Dallas key", after entering the code, the Dallas key must be placed on the appropriate Dallas key reader.
<b>Override user</b>	The override user 9 opens without waiting the time delay. By default it's set in dual mode opening but, upon request, the single mode opening can also be set. Can be activated connecting a Tecnosicurezza alarm interface to the lock and entering a valid code. The output is triggered by increasing or decreasing the last digit by one number when entering the opening code.
<b>Silent alarm</b>	
<b>Penalty</b>	After four attempts to enter an incorrect code, the lock starts a 4-minute delay period. Each attempt to enter the code within the 4 minutes delay period restarts the count.
<b>Low battery</b>	A series of beeps while opening indicates a low battery level. Replace immediately the low battery with a new Alkaline one.
<b>Sound signals</b>	A double beep  normally indicates a correct operation. A long beep  indicates an incorrect operation and the end of the operation itself.
<b>Recomm.</b>	Do not use easily identifiable codes such as 123456, dates of birth or other personal information.

### Opening (It is recommended to change the factory code before use and to safely store the new code)

Enter the opening code (default Manager code 123456).

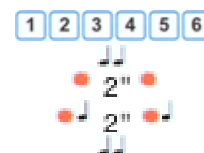
If the code is correct, the keypad will beep twice.

If programmed, the time delay count starts. The LED flashes every 2 seconds.

A beep every 2 seconds indicates the end of the time delay count.

Enter the opening code. The keypad beeps twice.

Open the safe door within 4 seconds (with MotorLock T4710/M, 2 beeps and 2 LED flashes are produced when the lock re-closes).



### Dual mode opening (It is recommended to change the factory code before use and to safely store the new code)

Enter the first opening code.

If programmed, the time delay count starts. The LED flashes every 2 seconds.

A beep every 2 seconds indicates the end of the time delay count.

Enter both opening codes. The keypad beeps twice.

Open the safe door within 4 seconds.



### Change code (Safely store the new code and perform various opening / closing tests before closing the safe door)

To be performed with the door open!

Press and hold  until the double beep. The LED remains on.

Enter the **old code**.

Enter the **new code**.

Confirm the **new code**.

Perform various opening / closing tests before closing the safe door.



### Activate a new user (Function not available if an user is already activated or disabled)

Press and hold  until the double beep. The LED remains on.

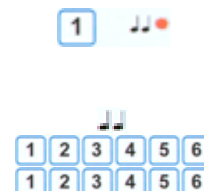
Enter the Manager code.

Enter the number of the user to be installed (from 1 to 9).

If the user is available, the keypad beeps twice.

Enter the code to be associated with the user (and the Dallas key if necessary).

Enter again the code to confirm it (and the Dallas key if necessary).



### Disable/Enable users (Function not available with dual mode opening active or if an user is already disabled)

## User instructions

## Pulse 10 users

Press and hold **2** until the double beep. The LED remains on.  
Enter the Manager code. The keypad beeps twice.  
All users are disabled/enabled.

### Delete an user (Function not available if an user is disabled or not activated)

Press and hold **3** until the double beep. The LED remains on.  
Enter the Manager code.  
Press the key corresponding to the user to be deleted (from 1 to 9).  
The keypad beeps twice. The user is deleted.

### Manager code check

Press and hold **4** until the double beep. The LED remains on.  
A double beep means the factory Manager code (123456) has been changed.  
A long beep means the factory Manager code (123456) has NOT been changed.

### Membrane test

Press and hold **5** until the double beep. The LED remains on.  
Enter the sequence of numbers from 1 to 0. A confirmation beep is given for each key.  
A damaged key is indicated with a long beep.

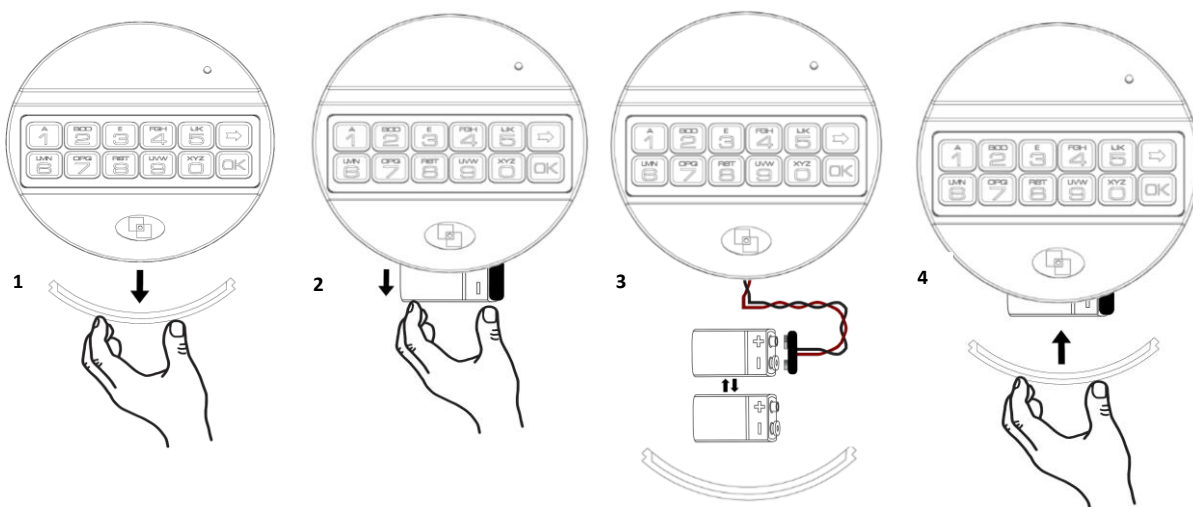
### Change lock reclosure mode (only for motorlock model T4710/M)

Hold press **6** until the double beep. Led remains on.  
Enter the Manager code or the code 555555 if the lock is in presetup mode. The keypad beeps twice to indicate the change in the lock closing mode (from automatic to manual or viceversa).

### Time delay (Time Delay programmable from 0 to 99 minutes; Open Window from 1 to 19 minutes)

Press and hold **9** until the double beep. The LED remains on.  
Enter the Manager code. The keypad beeps twice.  
Enter the values for the time delay and the open window in two digits (i.e. 10 and 05).  
Confirm the values for time delay and open window in two digits (i.e. 10 and 05).  
Attention, the time delay can only be lowered in the open window.

### Battery replacement procedure (To be performed with door open)



### Further information

For the complete manual and further information on the product's features, please visit [www.tecnosicurezza.it](http://www.tecnosicurezza.it)

