



PulsePRO

Default codes

Manager	6 0 - 1 2 3 4 5 6 +	Optional Dallas key
User 2	0 2 - 0 2 0 2 0 2 +	Optional Dallas key
User 3	0 3 - 0 3 0 3 0 3 +	Optional Dallas key
User x	x x - x x x x x x +	Optional Dallas key

Dallas key	In the event that the user is composed of "code + Dallas key", before or after entering the code, the Dallas key must be placed on the appropriate Dallas key reader.
Override users	The override users open without waiting the time delay. In the default programming they are set in dual code opening but, upon request, the single mode opening can also be set.
Silent alarm	It is activated by increasing or decreasing the last digit by one number when entering the opening code.
Penalty	After four attempts to enter an incorrect code, the lock starts a 4-minute delay period. Each attempt to enter the code within the 4 minutes delay period restarts the count.
Low battery warning	A series of beeps while opening indicates a low battery level. Replace immediately the low battery with a new Alkaline one.
Sound signals	A double beep  normally indicates a correct operation. A long beep  indicates an incorrect operation and the end of the operation itself.
Recomm.	Do not use easily identifiable codes such as 123456, dates of birth or other personal information.

Opening *(It is recommended to change the factory code before use and to safely store the new code)*

Enter the opening code (default Manager code 60-123456).

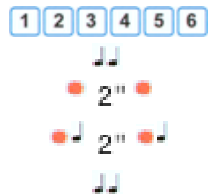
If the code is correct, the keypad will beep twice.

If programmed, the time delay count starts. The LED flashes every 2 seconds.

A beep every 2 seconds indicates the end of the time delay count.

Enter the opening code. The keypad beeps twice.

Open the safe door within 4 seconds.



Dual code opening *(It is recommended to change the factory code before use and to safely store the new code)*

Enter the opening code (default Manager code 60-123456).

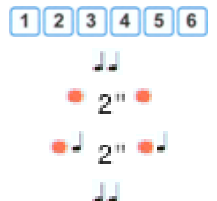
If the code is correct, the keypad will beep twice.

If programmed, the time delay count starts. The LED flashes every 2 seconds.

A beep every 2 seconds indicates the end of the time delay count.


Enter both opening codes. The keypad beeps twice.

Open the safe door within 4 seconds.



Change code *(Safely store the new code and perform various opening / closing tests before closing the safe door)*

To be performed with the door open!

Press and hold  until the double beep. The LED remains on.

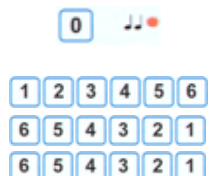
Enter the ID of the user whose code is to be changed.

Enter the **old code**.

Enter the **new code**.

Confirm the **new code**.

Perform various opening / closing tests before closing the safe door.



Activate a new user

Press and hold  until the double beep. The LED remains on.

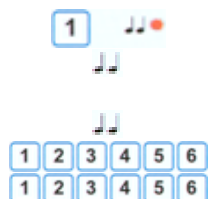
Enter the Manager code. The keypad beeps twice.

Enter the ID of the user to be installed.

If the user is available, the keypad beeps twice.

Enter the code to be associated with the user (and the Dallas key if necessary).

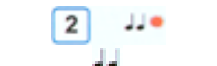
Enter again the code to confirm it (and the Dallas key if necessary).



Disable/Enable users *(Function not available if the dual code opening is activated)*

Press and hold  until the double beep. The LED remains on.

Enter the Manager code. The keypad beeps twice.



PulsePro

All users are disabled/enabled.

Delete an user

Press and hold **3** until the double beep. The LED remains on.

Enter the Manager code. The keypad beeps twice.

Enter the ID of the user to be deleted.

The keypad beeps twice. The user is deleted.



Membrane test

Press and hold **5** until the double beep. The LED remains on.

Enter the following sequence of keys: **1 2 3 4 5 6 7 8 9 0** **OK**

At the end the LED turns off.

A damaged key is indicated with a long beep.



ERC (Emergency Rescue Code)

If the function is available, allows to perform an emergency opening in case of loss of all the opening codes.

Press and hold **8** until the double beep. The LED remains on.

Enter the ERC code (98 – X X X X X X X X). The LED flashes.

Lock has been restored with the standard codes.



Time delay (Time Delay programmable from 0 to 99 minutes; Open Window from 1 to 19 minutes)

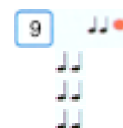
Press and hold **9** until the double beep. The LED remains on.

Enter the Manager code. The keypad beeps twice.

Enter the values for the time delay and the open window in two digits (e.g. 10 and 05).

Confirm the values for the time delay and the open window in two digits (e.g. 10 and 05).

Attention, the time delay can only be lowered with the lock open.



Select a configuration (to be performed with the LOCK OPEN!)

Press and hold **8** until the double beep. The LED remains on. If in pre-setup mode, skip the next two steps.

Enter the Manager code. The LED flashes.

Enter the Master code. The LED remains on.

Enter the ID of the chosen configuration. The keypad beeps twice.

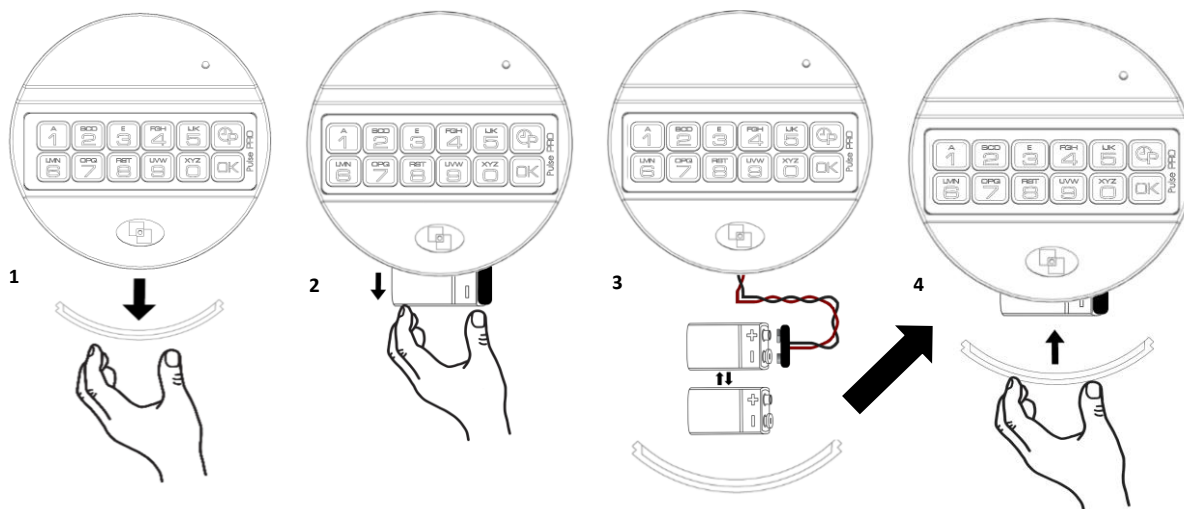
Confirm the ID of the chosen configuration. The keypad beeps twice.

Enter the format of the date (0=day/month/year, 1=month/day/year). The LED flashes.

The keypad beeps twice. The led goes off.



Battery replacement procedure (To be performed with door open)



10 USERS

	Manager management	Second Manager	Second Master	Configuration number
10 Users	-	-	-	02
	✓	-	-	12
	✓	✓	-	32
	✓	✓	✓	72
	✓	-	✓	52
	-	✓	-	22
	-	✓	✓	62
	-	-	✓	42

	Manager management	Second Manager	Second Master	Configuration number
10 Users in dual code opening	-	-	-	04
	✓	-	-	14
	✓	✓	-	34
	✓	✓	✓	74
	✓	-	✓	54
	-	✓	-	24
	-	✓	✓	64
	-	-	✓	44

10 USERS + 1 OVERRIDE USERS

	Manager management	Second Manager	Second Master	Configuration number
10 Users + 1 Override user	-	-	-	01
	✓	-	-	11
	✓	✓	-	31
	✓	✓	✓	71
	✓	-	✓	51
	-	✓	-	21
	-	✓	✓	61
	-	-	✓	41

	Manager management	Second Manager	Second Master	Configuration number

10 USERS + 1 OVERRIDE USER, Dual code opening

	Manager management	Second Manager	Second Master	Configuration number
10 Users + 1 Override user in dual code opening with all users	-	-	-	00
	✓	-	-	10
	✓	✓	-	30
	✓	✓	✓	70
	✓	-	✓	50
	-	✓	-	20
	-	✓	✓	60
	-	-	✓	40

	Manager management	Second Manager	Second Master	Configuration number
10 Users + 1 Override user. All users in dual code opening	-	-	-	03
	✓	-	-	13
	✓	✓	-	33
	✓	✓	✓	73
	✓	-	✓	53
	-	✓	-	23
	-	✓	✓	63
	-	-	✓	43

PulsePro

50 USERS

	Manager management	Second Manager	Second Master	Configuration number
50 Users	-	-	-	07
	✓	-	-	17
	✓	✓	-	37
	✓	✓	✓	77
	✓	-	✓	57
	-	✓	-	27
	-	✓	✓	67
	-	-	✓	47

	Manager management	Second Manager	Second Master	Configuration number
50 Users with dual code opening	-	-	-	09
	✓	-	-	19
	✓	✓	-	39
	✓	✓	✓	79
	✓	-	✓	59
	-	✓	-	29
	-	✓	✓	69
	-	-	✓	49

50 USERS+ 10 OVERRIDE USERS

	Manager management	Second Manager	Second Master	Configuration number
50 Users + 10 Override users	-	-	-	06
	✓	-	-	16
	✓	✓	-	36
	✓	✓	✓	76
	✓	-	✓	56
	-	✓	-	26
	-	✓	✓	66
	-	-	✓	46

	Manager management	Second Manager	Second Master	Configuration number

50 USERS + 10 OVERRIDE USERS, Dual mode opening

	Manager management	Second Manager	Second Master	Configuration number
50 Users + 10 Override users in dual code opening with all users	-	-	-	05
	✓	-	-	15
	✓	✓	-	35
	✓	✓	✓	75
	✓	-	✓	55
	-	✓	-	25
	-	✓	✓	65
	-	-	✓	45

	Manager management	Second Manager	Second Master	Configuration number
50 Users + 10 Override users. All users in dual code opening	-	-	-	08
	✓	-	-	18
	✓	✓	-	38
	✓	✓	✓	78
	✓	-	✓	58
	-	✓	-	28
	-	✓	✓	68
	-	-	✓	48

Further information

For the complete manual and further information on the product's features, please visit www.tecnosicurezza.it

