



## Pulse Pro HOTEL mode

### User instructions

#### Guest

##### Close the safe

Close the door.

Enter a 4 digit Guest code of your choice. The keypad beeps twice.

If "Guest code confirmation" is set, the LED remains on. Enter again the 4 digit Guest code to confirm. The keypad beeps twice.

The door is locked and the keypad beeps twice.



##### Open the safe

Enter the 4 digit Guest code chosen to lock the safe. The keypad beeps twice.

The door is unlocked and the keypad beeps twice.

Open the door.



**On departure**, leave the door open.

#### Manager

##### Emergency opening *(It is recommended to change the factory code before use and to safely store the new code)*

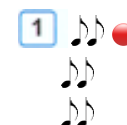
If Guest leaves and safe door is locked, or code is unknown, Manager can use the 6 digit Manager code (123456 by default) to open the safe.

Press and hold **1** until the double beep. The LED remains on.

Enter the 6 digit Manager code. The keypad beeps twice.

Wait for the motor to unlock the door (about 2 seconds). The keypad beeps twice.

Open the door.



##### Change Manager code *(Safely store the new code and perform an opening / closing test before closing the safe door)*

To be performed with door open!

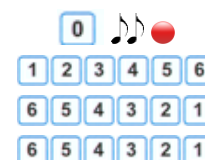
Press and hold **0** until the double beep. The LED remains on.

Enter the **old code**.

Enter the **new code**.

Confirm the **new code**.

Perform various opening / closing tests before closing the safe door.



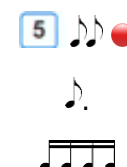
#### Lock functions

##### Membrane test

Press and hold **5** until the double beep. The LED remains on.

Enter the sequence of numbers from **1** to **0** and then **CP** and **OK**. A confirmation beep is given for each key.

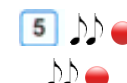
A damaged key is indicated with a long beep.



##### Lock setup

Press and hold **6** until the double beep. The LED remains on.

Enter the Manager code. The keypad beeps twice.



##### Guest code confirmation (function #1)

Enter **01**.

If the function is enabled, 2 short beeps are produced. If it's not enabled instead, a single short beep (bad sound) is produced.

*Default setting:  
function not  
enabled*

## User instructions

# Pulse HOTEL mode

Enter **1** to enable the function. Enter **0** instead to disable it. The keypad beeps twice.



### Date format (function #5)

Enter **05**.

A single short beep (bad sound) is produced for EU format dd/mm/yy and 2 beeps instead for US format mm/dd/yy.

Enter **0** to set EU format or enter **1** to set US format. The keypad beeps twice.



### **Lock audit download**

Press and hold **7** until the double beep. The LED remains on.



Enter the Manager code. The lock beeps twice.



### Download through Dallas key

Press **OK**. The led flashes.



Place an audit Dallas key (p.n. N1996RM) on the reader. The lock beeps twice once download is finish.



### Download through Pc Link

Press **CP**. The led flashes.



Place the connection cable (p.n. N42170/M) on the reader and download the audit using "PulsePro Audit" software. The lock beeps twice once download is finish.



### **Lock audit**

Read the audit using "PulsePro Audit" software. Guest is noted as "User 1" and Manager is noted as "Manager". Both the software and dedicated hardware are provided by Tecnosicurezza.

### **Lock functions**

If an incorrect operation is performed, wait 5 seconds until the led switches off and try again.



### **Penalty**

After four attempts to enter an incorrect code, the lock starts a 4-minute penalty period. Each attempt to enter the code within the 4 minutes penalty period restarts the count.

### **Low battery warning**

A series of beeps while opening indicates a low battery level.  
Replace immediately the low battery with a new Alkaline one.

### **Sound signals**

A double beep  normally indicates a correct operation. A long beep  indicates an incorrect operation and the end of the operation itself.

### **Recommendations**

Do not use easily identifiable codes such as 123456, dates of birth or other personal information.  
Do not use cleaning agents with chemical, abrasive or alcohol-containing additives to clean the components. Use only a damp cloth.  
Do not spray liquid directly onto the components.

### **Further information**

For further information on the product's features, please visit [www.tecnosicurezza.it](http://www.tecnosicurezza.it)

